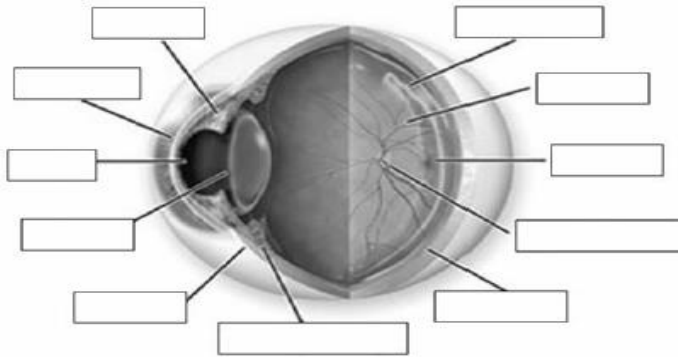


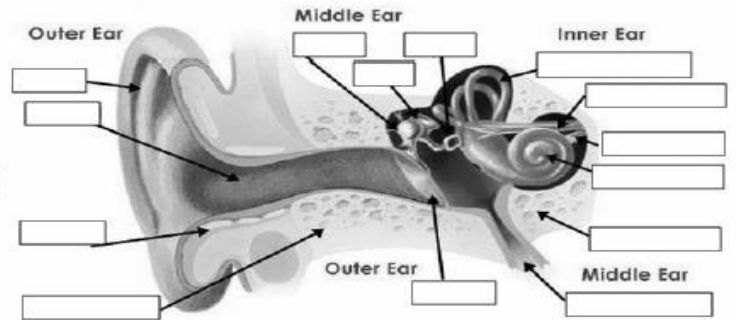
6. Using the following list, label the parts of the eye:

Optic Nerve	Ciliary Body	Iris	Cornea
Pupil	Retina	Sclera	Choroid
Vitreous	Lens	Macula	



7. Using the following list, label the parts of the ear:

Cartilage	Cochlea Nerve	Ear Canal	Vestibular Nerve
Stapes	Pinna	Malleus	Cochlea Organ
Ear Drum	Eustachian Tube	Incus	Vestibular Organ
Mastoid Process (2 places on the diagram)			



Genetic Abnormalities

8. Should people with genetic abnormalities associated with psychological disorders such as Down's syndrome, Klinefelter's syndrome, Fragile X syndrome, Huntington's disease, Cystic fibrosis, Sickle cell anemia, Tay-Sachs disease, Spinal muscular atrophy, Alzheimer's, schizophrenia, autism, etc. be prohibited from reproducing?

9. If so, which disorders?

10. What if they are just carriers of a recessive gene?

11. Should people routinely be screened for genetic problems before having children?